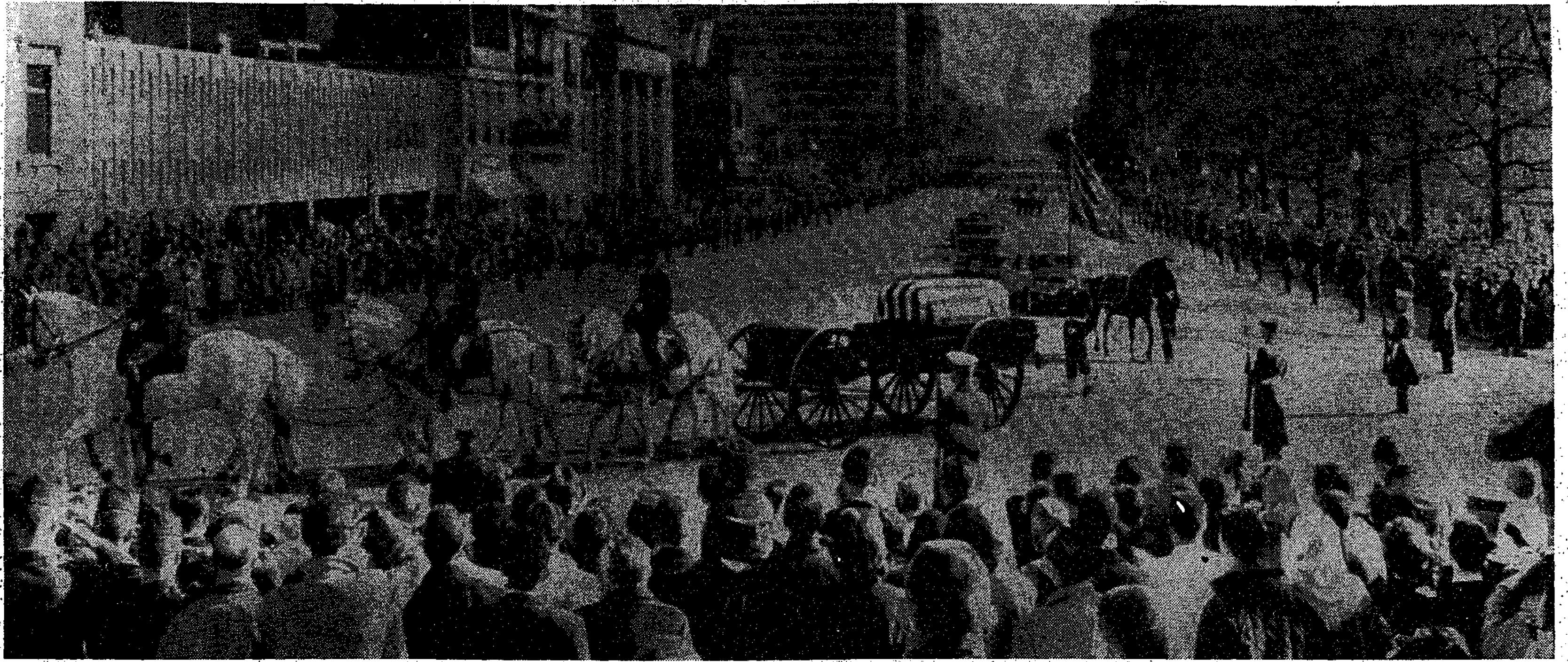


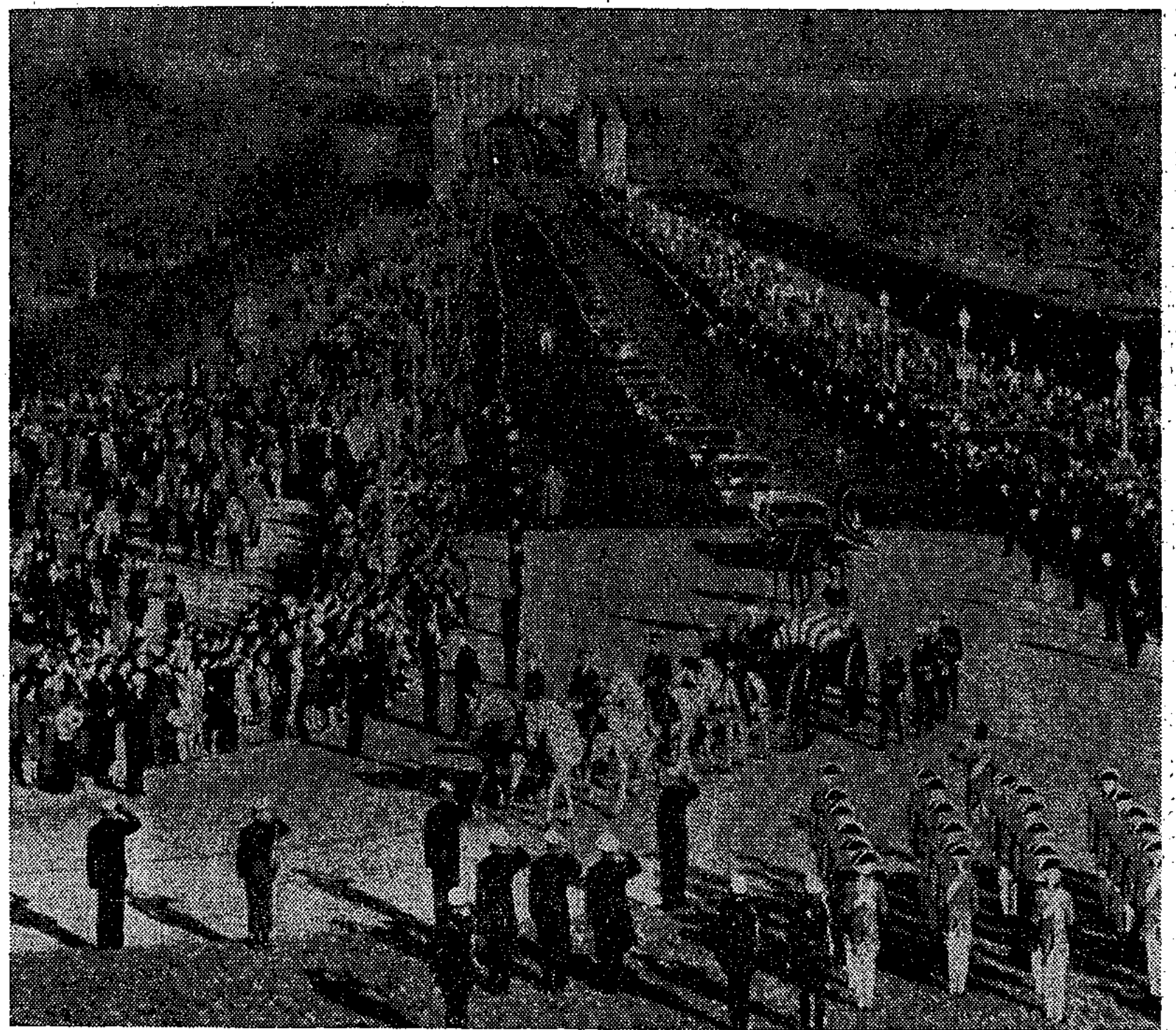
John Fitzgerald Kennedy Takes His Place Among the Dead of the Nation's Wars



For John Kennedy's last journey, the day is crisp and clear. The procession, on its way from the Capitol (background) to the White House, turns from Pennsylvania Avenue into 15th Street. Six matched gray horses draw the caisson.



Mrs. Kennedy and her children follow as the coffin is carried out of the cathedral. Beside her is Robert Kennedy.



Having crossed the Potomac River, the cortege proceeds down Memorial Avenue toward Arlington National Cemetery.



Gently, the body bearers lift the coffin off the caisson. Mrs. Kennedy is flanked by Robert and Edward Kennedy.



At the grave the widow, erect and still, receives flag that had covered the President's coffin for three days.

Associated Press and United Press International